

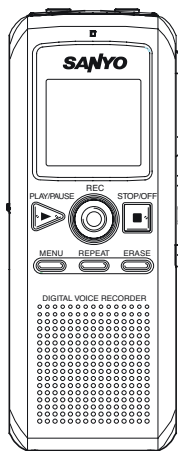


SANYO

INSTRUCTION MANUAL

ICR-FP500

Digital Voice Recorder



ENGLISH	1
DEUTSCH	25
FRANÇAIS	49
ESPAÑOL	74
PORTUGUÊS	99

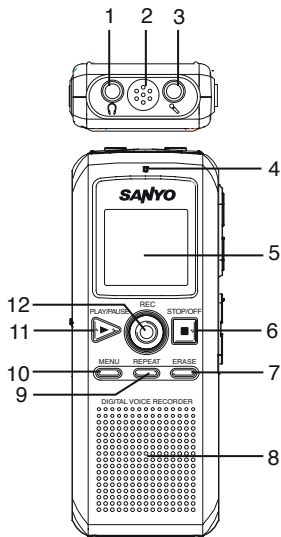
ENGLISH

Precautions

- The apparatus shall not be exposed to dripping or splashing.
- Do not drop the unit or subject it to strong shocks.
- Do not use where there are extremes of temperature (below 5°C or exceeding 35°C).
- Excessive sound pressure from earphones and headphones can cause hearing loss.

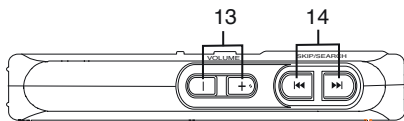
Controls

1. Earphone socket (📶)
2. Built-in microphone
3. External microphone socket (🎤)
4. Recording LED
5. Display
6. Stop/Power off button (■) (STOP/OFF)
7. Erase button (ERASE)
8. Built-in speaker
9. Repeat button (REPEAT)
10. Menu button (MENU)
11. Play/Pause/Power on button (▶) (PLAY/PAUSE)
12. Record button (●) (REC)

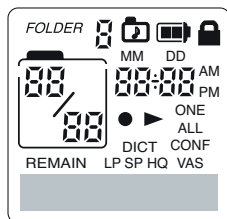


13. Volume buttons (VOLUME)

14. Skip/Search buttons (◀◀, ▶▶) (SKIP/SEARCH)



Display



Your SANYO product is designed and manufactured with high quality materials and components which can be recycled and reused.

This symbol means that electrical and electronic equipment, at their end-of-life, should be disposed of separately from your household waste.

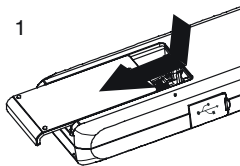
Please dispose of this equipment at your local community waste collection/recycling centre.

In the European Union there are separate collection systems for used electrical and electronic products. Please help us to conserve the environment we live in!

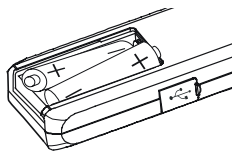


Inserting batteries

1. Remove the battery compartment lid.
2. Install two "R03/HP16/AAA" batteries (not supplied). Observe proper polarity and replace the lid.




2




Connections

External microphone

Plug an external microphone (not supplied) into the  socket. The built-in microphone is automatically disconnected.

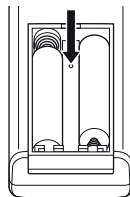
Earphone

Connect an earphone (not supplied) to the  socket for monitoring the content being recorded or for private listening. The built-in speaker is automatically disconnected.

WHAT TO DO IF...

If the operation of the unit or display is not normal,

1. Open the battery compartment lid.
2. Press the RESET switch for at least 3 seconds using a small ball-point pen, etc.
3. Resume operation.



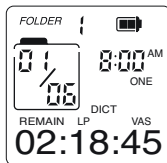
3

Getting start

Turning the power on and off

Press the PLAY/PAUSE button to turn the power on. The "LOADING." appears briefly then the display lights and the unit is in the stop mode. To turn the power off, press the STOP/OFF button for at least 2 seconds in the stop mode.

Example:



(Stop mode)

Battery indicator

Shows the battery condition while the unit is operating.



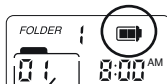
: Full



: Approximately half used



: Weak or exhausted batteries, must be replaced



CAUTION:

- Do not replace the batteries while the power is on. It may cause the unit malfunction.
- Remove the batteries if the unit will not be used for a month or longer.
- Dispose of all used batteries safely and in accordance with all applicable laws.
- Battery shall not be exposed to excessive heat such as sunshine, fire or the like.

Auto power off function

If you do not use the unit for 3 minutes, the power will be automatically turned off.




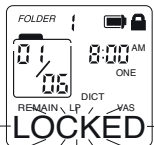
Lock function

This function avoids accidental button activation during recording or playback.

Press the MENU button for at least 2 seconds to set the lock mode. “LOCKED” flashes briefly and “” remains lit.

- If you press any other button while the unit is in the lock mode, “LOCKED” flashes and the button will not function.

Press the MENU button for at least 2 seconds again to release the lock mode. “” disappears.



Beep

Beep sound can be heard whenever you press any button except during playback and recording (See page 8).

Date and time setting

With this function, you can always read on the display the recording date and time of your recorded messages (See page 9).

- You can still use this unit for normal recording without setting the time. However, no correct recording date and time can be referred for your recorded messages.



Menu function

Common procedures of menu function

1. In the stop mode, press the MENU button briefly. The unit enters the menu setting mode. Only the related indicator is lit and all other indicators go off.

Each time the button is pressed, the display changes as follows:

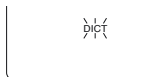
“DICT” (or “CONF”) → “LP” (or “HQ” or “SP”) → “VAS” (OFF or ON) → “SPEED” (or “SLOW” or “FAST”) → “ONE” (or “ALL”) → “TONE” (or “NO TONE”) → Date and time setting mode (YEAR, MM/DD, 12 or 24 HOUR, TIME) → Stop mode

2. To change the setting of the selected menu, press the ►► or ◀◀ SKIP/SEARCH button. (For more detail, refer to the following explanations.)
 - If no button is pressed within 10 sec., the stop mode returns.
3. Press the STOP/OFF button to quit the menu setting mode. The stop mode returns.

DICT (or CONF) : Setting recording condition

DICT (dictation): In a more enclosed area and recording source is close to the unit.

CONF (conference): In a more open area and recording source is far from the unit.





LP (or HQ or SP) : Setting recording quality

The recording time differs as shown below.



Recording mode	Recording time (approx.)
LP: Long	140 hr
SP: Standard	70 hr
HQ: High-quality	35 hr

VAS (OFF or ON) : Setting VAS (Voice activated system)

OFF: To start and stop recording manually

ON: Recording begins when you are speaking into the microphone. When dictation stops for about 3 seconds, recording stops. "VAS" remains lit.

Press the "+" or "-" VOLUME button to set the microphone's sensitivity when recording begins. The VAS sensing mode appears ("SEN LOW", "SEN MID", "SEN HIGH").

OFF



DICT

LP

VAS

SEN HIGH

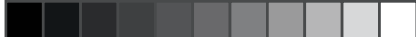
SPEED (SLOW or FAST) : Setting playing speed

SPEED: Normal playback

SLOW: Slow forward playback

FAST: Fast forward playback

SPEED



ONE (or ALL) ► : Setting play mode

- ONE: To play a specific file.
- ALL: To play all files in a folder.



TONE (or NO TONE) : Setting beep

TONE: Beep sound can be heard
whenever you press any button except
during playback and recording.

NO TONE: Beep off

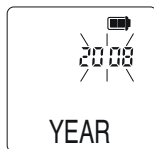




Date and time setting mode: YEAR, MM/DD, 12 or 24 HOUR, TIME

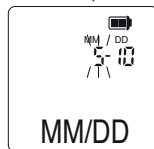
1. In the stop mode, press the MENU button seven times. The unit enters the date and time setting mode. "YEAR" appears and the year display flashes.

(Year)



2. Press the ►► or ◄◄ button repeatedly to select the year.
3. Press the MENU button. The month display flashes.

(Month)



4. Set the month, day, hour display (12-hour or 24-hour), hour and minute by following steps 2 - 3 above.

(Day)

(Hour display)

(Hour)

(Minute)



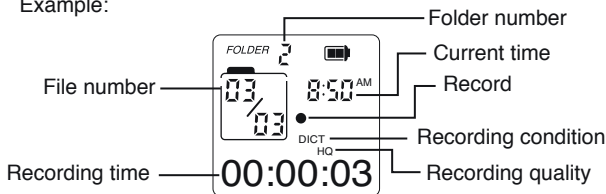


Recording

Set the recording condition (DICT/CONF), recording quality (LP/HQ/SP) and VAS function before you start recording (see pages 6-7).

1. In the stop mode, select the desired folder (see page 12).
2. Press the REC button. Recording starts with new file number.
The recording LED lights.

Example:



- For recording with VAS: See page 7.
3. To pause recording, press the REC button. "PAUSE" appears and the recording LED flashes. Press it again to resume recording.
4. Press the STOP/OFF button to stop recording, "SAVE" appears briefly.
Total remaining time for recording appears.

To view the remaining recording time, press and hold the PLAY/PAUSE button during recording.

Note:

- You can record up to 99 files in one folder, not exceeding 594 files in total.
- When you are recording a power off occurs suddenly (Example: Batteries fall down), the contents you recorded will not be saved.

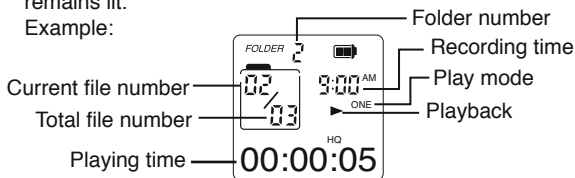


Playback

Set the play mode (ONE/ALL) before you start playback (see page 8).

1. In the stop mode, select the desired folder (see page 12).
2. Press the ►►| or |◄◄ SKIP/SEARCH button to select the desired file.
3. Press the PLAY/PAUSE button to start playback. The recorded date appears briefly on the time display, then the recorded time remains lit.

Example:



4. To pause playback, press the PLAY/PAUSE button. "PAUSE" appears. Press it again to resume playback.
5. Press the "+" or "-" VOLUME button to adjust the volume (VOL 00 - VOL 28).
6. Press the MENU button. Playback point reverses for 5 seconds within a file and playback continues.
7. Press and hold the ►►| or |◄◄ button to make a quick search within a file.
8. Press the ►►| button briefly to skip to the next file. Press the |◄◄ button briefly to skip back to the beginning of the previous file.
9. Press the STOP/OFF button to stop playback.

VOL ^{HQ} 13



Introsan

Play back the first 3 seconds of each file in a folder.

1. In the stop mode, select the folder.
2. Press the ►► or ◀◀ button repeatedly until “ALL” appears.
3. Press the PLAY/PAUSE button to start introsan and “INTRO” appears.
4. Press the STOP/OFF button to stop introsan.



REPEAT button: Select desired folder

In the stop mode, press the REPEAT button repeatedly to select the folder (1, 2, 3, 4, 5, 6 and music)

Note:

- In the FOLDER 1 ~ FOLDER 6 folder only the recorded file can be played.
- In the music folder only MP3 and WMA file can be played.

Designated range repeat play (A-B Repeat)

1. Press the REPEAT button during play at the beginning of the section you want to repeat (Point A).
2. Press the REPEAT button again at the end of the section (Point B). “AB REP” appears. The section between points A and B is played repeatedly.
3. To return to normal play, press the REPEAT button again.





Erasing

Erasing the selected file

1. In the stop mode, select the folder and file.
2. Press the ERASE button briefly. “DEL” and selected file number “01” flash.
3. While “DEL 01” is flashing, press the ERASE button for at least 2 seconds. The selected file in the folder is erased. All the file numbers after the file that was erased are reduced by one.



Erasing all files in one folder

1. In the stop mode, select the folder.
2. Press the ►► or ◀◀ SKIP/SEARCH button until “ALL” appears.
3. Press the ERASE button briefly. “DEL ALL” flashes.
4. While “DEL ALL” is flashing, press the ERASE button for at least 2 seconds. All the files in the selected folder are erased.

Formatting (Erasing all files in all folders)

When the “DEL 01” or “DEL ALL” is blinking press the REC button for at least 3 seconds. “FORMAT” blinks and press the “ERASE” button for at least 2 seconds, the formatting percentage changes from 000% ~ 100% on the display. All files in all folders are erased.

- If you do not want to erase, press the STOP/OFF button.
- If you select the format function, the memory will be initialized and all files will be erased. Use only when you need it. Save a backup copy of your recorded messages on a PC, etc, if required.



Connecting to PC

Recommended PC environment

Supported PCs Windows preinstalled PC

Supported OS Windows Vista

Windows XP Professional

Windows XP Home Edition

Windows Millennium Edition(Me)

Windows 2000 Professional (After SP3)

USB port One required for connection

Other Speakers or headphones required

Sound playback function required

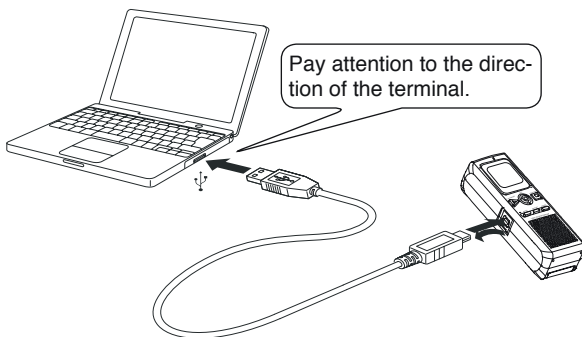
Note:

- Operation is not guaranteed for Macintosh PCs.
- Operation is not guaranteed for the following environments.
 - Upgraded Windows environments
 - Windows 95, Windows NT, Windows 98,
 - Windows 98SE
 - Dual-boot Windows environments
- Standby, suspend, and other modes may not work properly with your particular environment. If this is the case, do not use those modes.
- This is not guaranteed to operate with all PCs in the recommended setup.
- The file with copyright protection can not play on this unit.
- When using Windows XP or Windows 2000,
 1. Log in as an administrator.
 2. "Dynamic Disc" introduced in Window XP/2000 is not supported.



Connect the unit to your PC

Connect the unit to the USB terminal of the PC by using the original USB connection cable supplied.



Note:

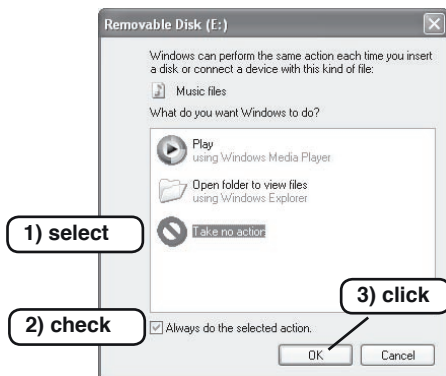
- Do not use an USB hub or USB extension cable (Operation is not guaranteed). Use only the supplied USB connection cable.
- When you connect the unit to the PC for the first time, it sometimes may not be recognized as a Removable Disk. In this case , disconnect the unit and reconnect it again.



Selecting the action Windows is to take

After connection, the following screen will appear (Windows XP only).

- For Windows Me/2000, this operation is not needed.



Adjust your settings to match your PC's environment.

In this manual, "Take no action" is selected, "Always do the selected action" is checked, and "OK" is clicked. This completes the connection to the PC.

When connected to the PC, the unit display will be as shown below and none of the operating buttons will work.

PC LINK

Disconnecting the unit from your PC

Before disconnecting, make sure no data is being transferred.

For Windows XP

Follow the steps below to disconnect.

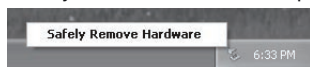
- The screen might be different for a different OS.

1. Right-click Task tray icon at the bottom right of the Windows screen.

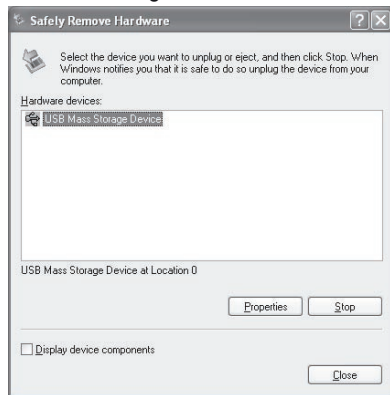


If the icon is not displayed, refer to the Windows help.

2. Click the "Safely Remove Hardware" displayed.



3. Select "USB Mass Storage Device" and click "STOP".



4. Select the “USB Mass Storage Device” and click “OK”.



5. Disconnect the unit from your PC.

Displaying by Explorer

To start up Explorer

To use the same Explorer screen as the ones used in this manual, start up the Windows XP Explorer as follows.

- The screens displayed on your PC may not exactly correspond to those shown in this manual depending on the OS version and manufacturer.

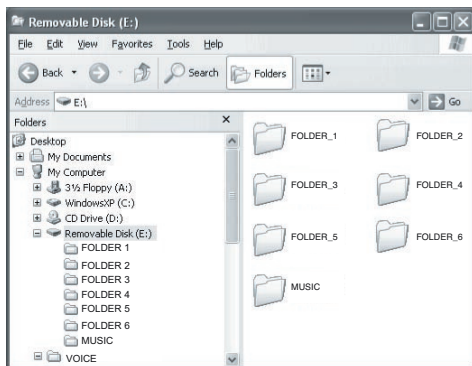
Click “start”, then right-click “My computer”, and select “Explorer” from the menu that appears.



Explorer will start up.

Removable Disk display

An icon for a Removable Disk will appear in My Computer in Windows when the unit is connected to your PC.



[FOLDER 1] ~ [FOLDER 2]

Files recorded using the unit are stored here.

[MUSIC]

Files transferred from your PC are stored in this folder.

- There is no set format for file names for files, which are transferred, but they must be MP3/WMA files.
- You can not create a folder in the MUSIC folder and move files to the folder.

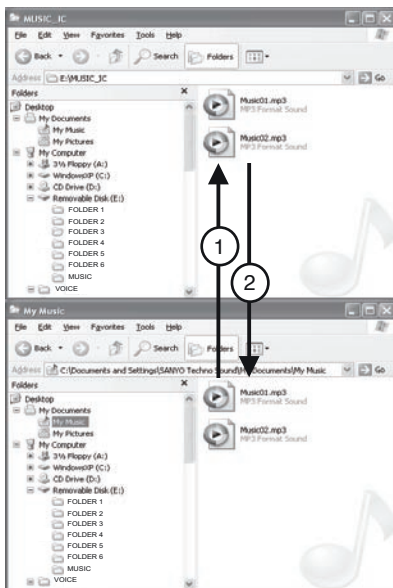
Copying data by using Explorer

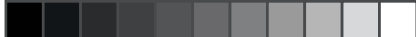
Start up Explorer (see page 19)

Copying files to the unit

Select the MP3/WMA (except for DRM contents) files to copy and drag and drop them to the MUSIC folder in the Removable Disk drive.

- Be sure to place the files in the MUSIC folder in the Removable Disk.





Copying files to your PC

Select the MP3/WMA files you wish to copy inside the MUSIC folder on the Removable Disk and drop them into a folder of your choice on your PC.





Troubleshooting guide

Display is blank

- Check that the batteries are inserted proper polarity and not exhausted.

Buttons do not respond

- Make sure the lock function is not activated.

Cannot record

- Make sure memory is not full.
- You have recorded 99 files in one folder. Try record in a new folder.
- Check the total files are not exceeding 594.

No sound

- Make sure the volume is not set to 0.
- Make sure you have selected folder with recorded messages.
- Earphone should not be connected.

The Removable Disk is not displayed when the unit is connected to the PC

- Make sure the connect is corrected.
- Disconnect the unit from the PC and connect it again.





Cleaning the cabinet

Clean the outside of the unit with a clean soft cloth, moistened with lukewarm water. Do not use benzene, thinner or alcohol since they will mar the finish of the surfaces.

Sanyo cannot be held responsible for damage caused by improper use or modifications to the device, or data that is lost or destroyed.

The normal function of the product may be disturbed by strong Electro-Magnetic Interference. If so, simply reset the product to resume normal operation by following the instruction manual. In case the function could not resume, please use the product in other location.



This set complies with the EMC Directive 2004/108 and with the LVD Directive 2006/95.

Dieses Gerät entspricht der EMC-Direktive 2004/108 und der LVD-Direktive 2006/95.

Cet appareil est en conformité avec la directive EMC 2004/108 et avec la directive BT 2006/95.

Dit toestel is in overeenstemming met EMC-richtlijn 2004/108 en met LVD-richtlijn 2006/95.

Detta set uppfyller EMC-direktivet 2004/108 och Lågspänningsdirektivet 2006/95.

Questo set aderisce alle direttive EMC 2004/108 e alle direttive LVD 2006/95.

Este aparato cumple con la Directiva EMC 2004/108 y con la Directiva LVD 2006/95.

Este conjunto satisfaz a Directiva EMC 2004/108 e a Directiva LVD 2006/95.



SPECIFICATIONS

Frequency response

400 Hz - 2,500 Hz

Output power

120 mW

Power source

DC: DC 3V

("R03/HP16/AAA" x 2)

Loudspeaker

28 mm dia.

Output terminal

Ω : 32 ohms

Dimensions (W x H x D)

Approx. 43 x 111 x 20 mm

Weight

Approx. 40 g (without batteries)

IMPORTANT INFORMATION

Because its products are subject to continuous improvement, SANYO reserves the rights to modify product designs and specifications without notice and without incurring any obligation.

SANYO FISHER Sales (Europe) GmbH
Stahlgruberring 4, D-81829
München, Germany

SANYO

SANYO Electric Co., Ltd.

5-5, Keihan-hondori, 2-chome, Moriguchi City, Osaka, Japan

(XE) AX809FP500002L